



Prostup Roxtec CF 24

Otevíratelný vstup pro skříně a rozvaděče.

Vstupní těsnění Roxtec CF 24 má sešroubovaný hliníkový rám. Kompresní jednotka je zabudována v rámu. Rám je otevíratelný a usnadňuje tak montáž na již instalované kabely. Produkt se dodává v podobě souprav připravených k bezprostřednímu použití, které zahrnují veškeré nezbytné komponenty.



- Odlehčené
- Kompaktní
- Optimální pro dodatečnou montáž

Vlastnosti výrobku



Protipožární



IP/UL NEMA

Struktura instalace



Skříně a rozvaděče

Specifikace a certifikáty

Protipožární ochrana

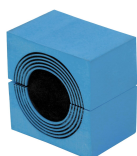
- Požární odolnost E/EI podle EN 45545 E30

Těsnost

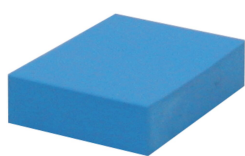
- IP 66/67

Údaje o izolačních komponentách

Těsnící komponenty



Modul CM s technologií Multidiameter™



Plný kompenzační modul CM



Kotevní destička C

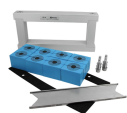


Mazivo Roxtec

Podrobné informace najdete na stránkách www.roxtec.com.

Konfigurované soupravy vstupů

mm/kg



CF 24/8



CF 24/12



CF 24/28

Název	Konfigurace	Vnější rozměry WxHxD	Rozměry otvoru w x h	Hmotnost Typ. č.
CF 24/8	8x (10.0-25.0)	209 x 100 x 30	170(-2) x 60	1.5 CF00000240035
CF 24/12	8x (3.5-16.5), 4x (9.5-32.5)	209 x 100 x 30	170(-2) x 60	1.5 CF00000241235
CF 24/28	16x (3.5-16.5), 12x (3.5-10.5)	209 x 100 x 30	170(-2) x 60	1.5 CF00000242835



The product information provided by Roxtec does not release the purchaser of the Roxtec system, or part thereof, from the obligation to independently determine the suitability of the products for the intended process, installation and/or use.

Roxtec gives no guarantee for the Roxtec system or any part thereof and assumes no liability for any loss or damage whatsoever, whether direct, indirect, consequential, loss of profit or otherwise, occurred or caused by the Roxtec systems or installations containing components not manufactured by an authorized manufacturer and/or occurred or caused by the use of the Roxtec system in a manner or for an application other than for which the Roxtec system was designed or intended.

Roxtec expressly excludes any implied warranties of merchantability and fitness for a particular purpose and all other express or implied representations and warranties provided by statute or common law. User determines suitability of the Roxtec system for intended use and assumes all risk and liability in connection therewith. In no event shall Roxtec be liable for indirect, consequential, punitive, special, exemplary or incidental damages or losses.

The Roxtec products are offered and sold in accordance with the conditions of the Roxtec General Terms of Sales. The latest version of the Roxtec General Terms of Sales can be downloaded from <https://www.roxtec.com/en/about-us/about-roxtec/general-terms-of-sales/>

We reserve the right to make changes to the product and technical information without further notice. Any errors in print or entry are no claims for indemnity. The content of this publication is the property of Roxtec International AB and is protected by copyright.

This document was generated on: 2024-04-06